

GARDEN MAINTENANCE MADE EASY

# Super Chipper

BY



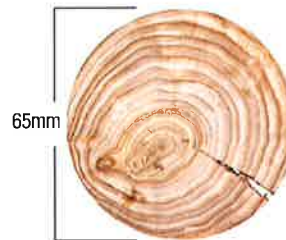
URNS UP TO APPROX. 65MM BRANCHES INTO CHIPS FROM 6-15MM IN MINUTES.



## COX SUPERCHIPPER SPECIFICATIONS

PRODUCT CODE	CGR06B	CGR06H
ENGINE	Briggs & Stratton	Honda
ENGINE MODEL	130G320 6.5HP (4.8kw)	GX200 6.5HP (4.8 kw)
WEIGHT	98kg	98kg
HEIGHT	1465mm	1465mm
APPROX. CAPACITY	up to 65mm branches	up to 65mm branches
PRICE	\$	\$

\*POWER= GROSS HORSEPOWER @ 3600RPM PER SAE J1995



**THE COX SUPERCHIPPER... IT CLEANS UP GARDEN WASTE, PROVIDES FREE ENRICHING MULCH, CUTS DUMPING COSTS. A REAL ENVIRONMENTAL ASSET!**

**TURN BRANCHES & PRUNINGS INTO NUTRIENT-RICH GARDEN MULCH. SAVE ON DUMP COSTS, NO MORE UN-NEIGHBOURLY BURN OFFS.**



### Cutting Chamber

Easy access to chipping chamber and blades. Robot welded flywheel. Dual super strong blades, removable for sharpening.



A pile of prunings reduced to a barrow load of fine, nutrient rich mulch, in just minutes. Retains moisture in the garden, too.

- Your choice of **Honda** or **Briggs & Stratton** power\*.
- **Tough housings** formed from 5mm solid steel plate.
- **Twin belt drive** protects engine against sudden load shock.
- **Twin cutting blades** shear branches against case-hardened, steel anvil.
- **Easy starting** – manual clutch disengages cutter disc.
- **Self-feeding.**
- **Proudly Engineered and Built in Australia.**



YOUR LOCAL COX AUTHORISED, SERVICING DEALER:



CHIPPING MADE EASIER WITH THE LARGE CAPACITY

# Super Chipper

BY



**EFFORTLESSLY TURNS BRANCHES, UP TO 90MM THICK, INTO CHIPS 10-20MM, IDEAL FOR ORCHARD OR GARDEN NUTRIENT-RICH MULCH AND COMPOST.**

## COX SUPERCHIPPER SPECIFICATIONS

Dimensions, Mass, Capacity	CGR13B Briggs & Stratton (25T232 0072H1)	CGR13H Honda (GX390 UT2 QXUZ)
Length: Incl. Draw Bar	2426mm	2426mm
Width Min. Deflector Down	1156mm	1156mm
Height	1568mm	1568mm
Dry Mass	206kg	206kg
Engine Design & Performance Model		
Type	Petrol, 4 Stroke, Air Cooled, 25.4mm (1") Horizontal PTO Shaft, Fuel Tank, Recoil Start.	Petrol, 4 Stroke, Air Cooled, 25.4mm (1") Horizontal PTO Shaft, Fuel Tank, Recoil Start.
Cylinder Configuration	Cast Iron Sleeve Single	Cast Iron Sleeve Single
Displacement	420cm <sup>3</sup>	389cm <sup>3</sup>
Valve Type	Overhead	Overhead
Rated Engine Speed (No Load) Maximum	3600RPM	3600RPM
Fuel Tank Capacity	6.6 Litres	6.1 Litres
Machine Design & Performance:		
Type: Engine PTO Shaft driving disengageable twin V Belt driven rotor with 2 greaseable unit ball bearing mounts.	2 Bolted Chipper knife blades & adjustable hardened anvil	2 Bolted Chipper knife blades & adjustable hardened anvil
Capacity	90mm (3-1/2") diameter	90mm (3-1/2") diameter
Inlet Hopper Mass	25kgs	25kgs
PRICE	\$	\$

- Your choice of **13.5HP\* Briggs & Stratton** or **13HP\* Honda** engine.
- **Tough housings** formed from 5mm solid steel plate.
- **Twin belt drive** protects engine against sudden shock loads.
- **Twin cutting blades** shear branches against case hardened, steel anvil.
- **Easy starting** – manual clutch disengages cutter disc.
- **Self-feeding.**
- Easy access to chipping chamber and blades. Robot welded flywheel.
- **Dual super strong blades, removable for sharpening.**
- Both models come **standard with draw bar.**
- **50mm ball tow-hitch** is available as an accessory.
- **Proudly Engineered and Built in Australia.**

\*POWER= GROSS HORSEPOWER @ 3600RPM PER SAE J1995

**THE COX RIDE-ON MOWER & CHIPPER RANGE IS AVAILABLE ONLY FROM COX AUTHORISED, SERVICING DEALERS.**

**FRECALL 1800 330 444 | [www.coxmowers.com.au](http://www.coxmowers.com.au)**

70 Landseer St, Acacia Ridge, Brisbane Qld 4110 P 07 3323 2222 E [sales@cox-mowers.com.au](mailto:sales@cox-mowers.com.au)

COX INDUSTRIES (AUST) PTY LTD ABN 34 050 991 038



SCAN THE QR CODE FOR MORE INFORMATION ON THIS, AND OTHER GREAT COX PRODUCTS